

---

# AIR CONDITIONING DIVISION ORGANIZATION, PARTNERS and SKILLS

## Contimetra / Sistimetra Group

Portuguese Company acting in the HVAC market since 1964.

Two own offices : Lisboa and Porto

HVAC Team : 40 people



## What we do?

Local distributor of components and systems from important and well-known worldwide brands like:

**TROX<sup>®</sup> TECHNIK**  
The art of handling air

**Johnson  
Controls** 

**Frese**  
Energy-saving valves

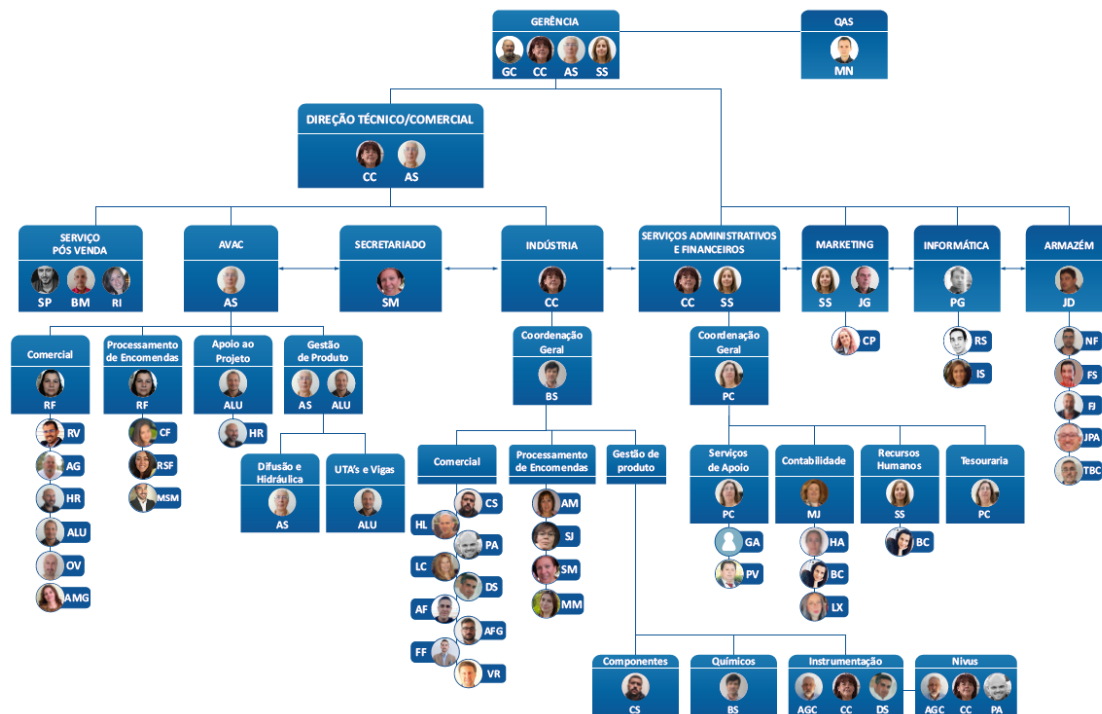
**BELIMO<sup>®</sup>**

## What we do?

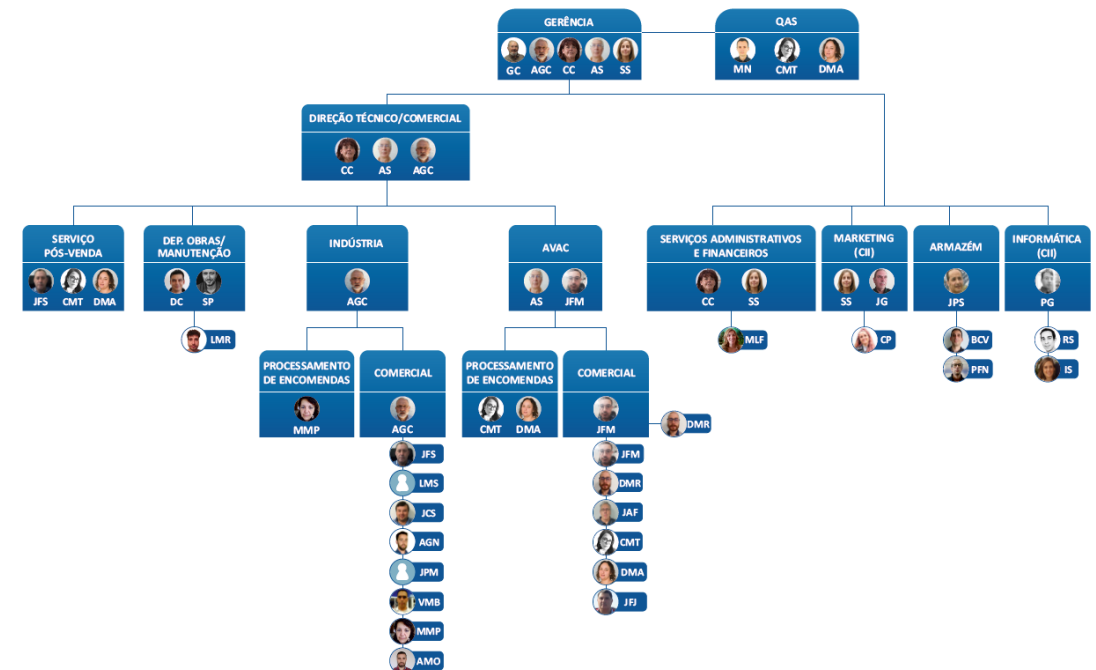
We act as an engineering company interface between the needs of the Portuguese HVAC market and the solutions presented by our suppliers. So we are bringing innovative ideas, components and solutions to the Portuguese market for more than 55 years.

# Who are we? This is our company organization chart

## Commercial and Warehouse, Lisbon

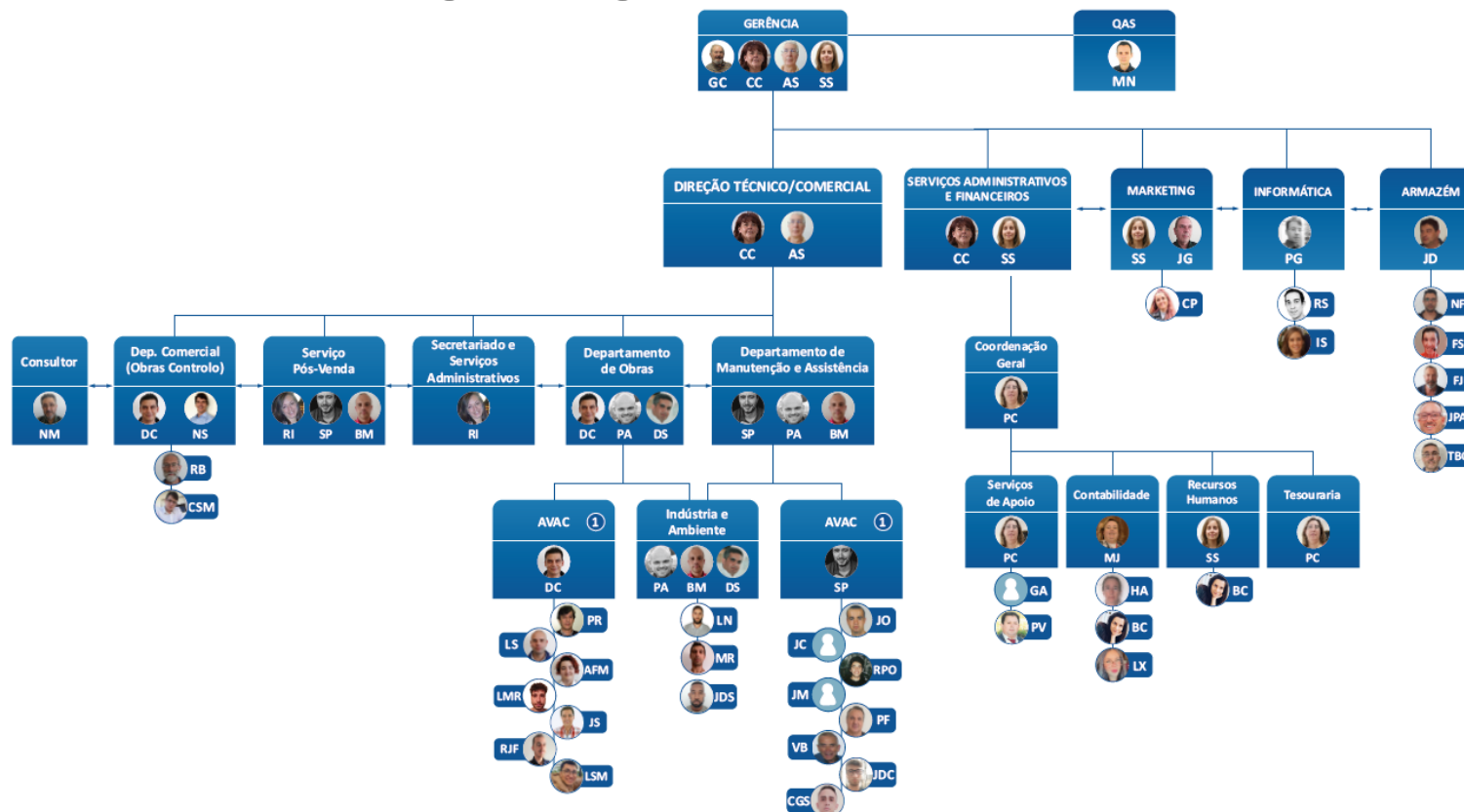


## Commercial and Warehouse, Oporto



# Who are we? This is our company organization chart

## Engineering and Maintenance Services, Lisbon



## Our skills in HVAC market

- Support consulting and engineering companies
- Supply and implementation of global solutions
- Building Management Systems (BMS)
- Air Handling Units (AHU's)
- Air distribution (diffusers, flow regulations, etc)
- Terminal filters (HEPA)
- Fire and smoke control
  - Components: Fire dampers; smoke control dampers, smoke controllers
  - Implementation of Fire Matrix and monitorization of all Fire Components
- Control and balance hydronic components

## Particular skills

- Complete air treatment components and systems for hospitals and pharmaceutical industry
- BMS for big and iconic buildings
- BMS for validated environments facilities – pharmaceutical industry
- Complete air treatment components and BMS for laboratory environments with cupboards – investigation centers and universities, mainly.



Hospital environment  
Integrated climate solutions

HVAC facilities in hospitals are much more than systems driven towards the comfort of users. Due to the medical activity, these facilities must ensure, in continuous operation, environments with levels of comfort, noise, hygiene and safety much higher than usual, taking into account energy efficiency.

X- CUBE Hygienic AHU



Hygienic Terminal Unit



## Hospital environment Integrated climate solutions

### The advantages

- A pleasant, clean and noise-free environment
- Without terminal fan, without condensate and without filter
- Reduced maintenance time and cost
- Energy savings of approx. 22% and 6% less CO2 emissions compared with the solution with fan coils

# AIR CONDITIONING DIVISION

## Organization, partners and skills



VAV terminal units



Swirl diffusers



Water systems



**TROX<sup>®</sup> TECHNIK**  
The art of handling air

## EASYLab

The most advanced air flow control system in laboratory rooms

### What we guarantee

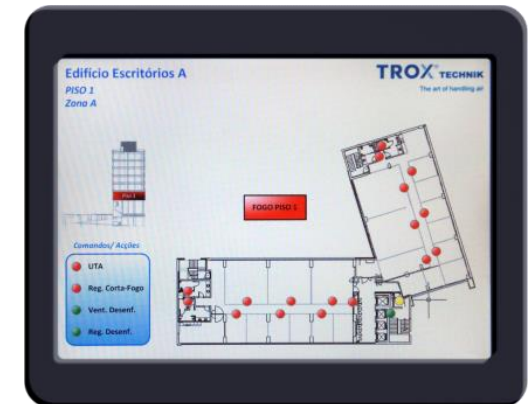
- Simplified design - expandable Plug and Play system.
- Supply and implementation of global solutions
- Security conditions for cupboard operators
- High energy savings
- Flexibility in the use of each cupboard - without affecting the rest
- Operational stability at every moment

## TroxNetCom

A fire/smoke system is only safe if it can be tested periodically in an easy way.  
TroxNetCom is the solution to this problem.

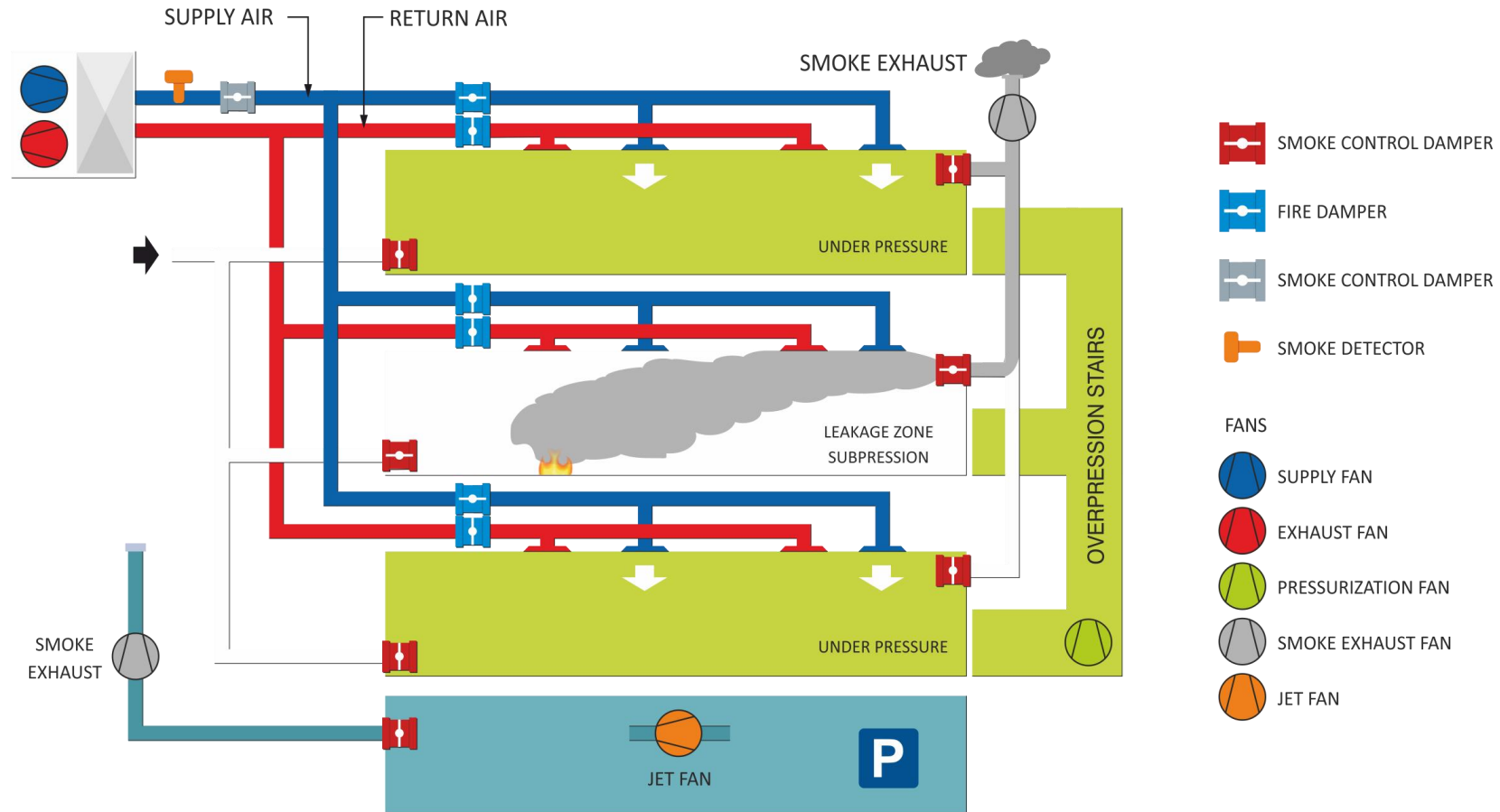
### Preventive maintenance at your fingertips

- Homologated BUS system (LonWorks)
- Simplified project
- Flexibility - fire zones can be defined at the end of the job
- Easy to integrate into HVAC, BMS and SADI installations
- Fewer cables => less installation costs
- Centralized and permanent monitoring of the entire network of fire dampers, smoke control dampers and associated fans



# AIR CONDITIONING DIVISION

## Organization, partners and skills





---

# SERVICES DIVISION

## BMS Supply, Install and Maintenance

SERVICES DIVISION  
BMS Supply, Install and Maintenance

---



Metasys Building Management System

### **Contimetra as Johnson Controls ABCS**

Our BMS services are exclusive with Johnson Controls brand, including:

- BMS Project support
- Commercial support / visit
- BMS full Equipment Supply and Panel build
- Full Commissioning, test and program in Site
- Training
- Maintenance



---

**AUTHORIZED BUILDING  
CONTROLS SPECIALIST**

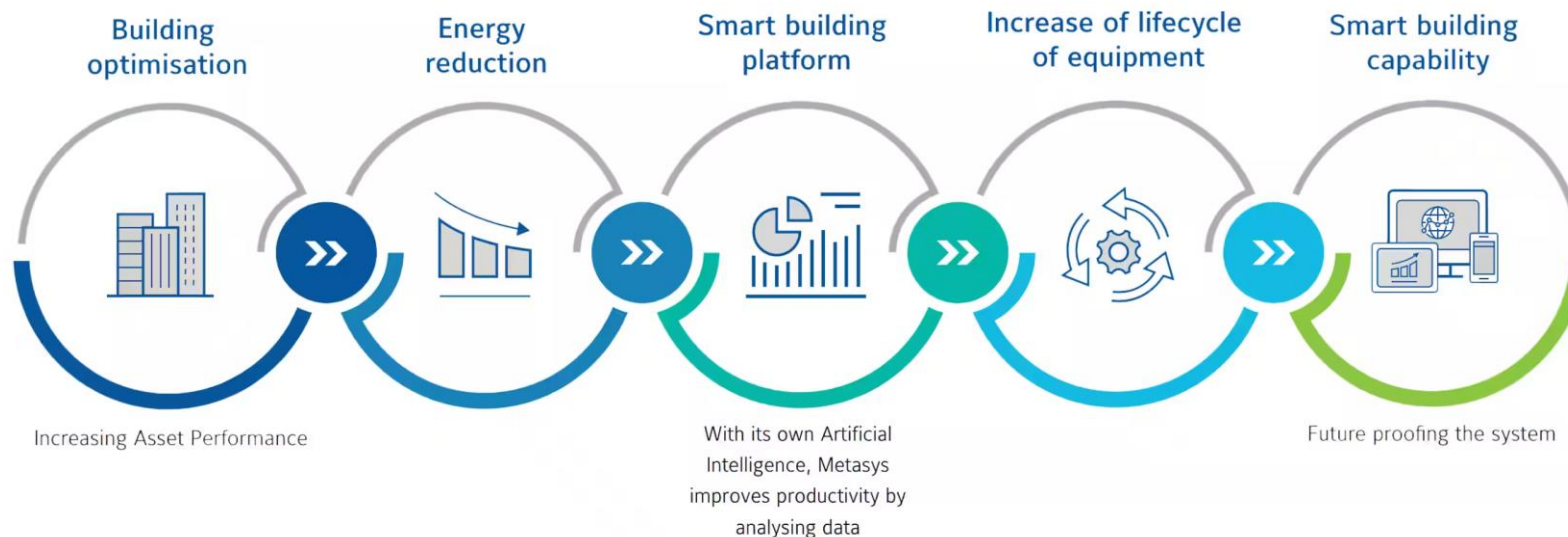


## Metasys Building Management System

### Metasys® by Johnson Controls

Elevate your building's efficiency with Metasys®, the cutting-edge building energy management system seamlessly integrating HVAC, lighting, security, and fire protection systems on a unified platform.

Say goodbye to managing multiple systems – with Metasys, you can make informed decisions, save costs, and optimise your building's functionality. Take full control of your building energy management system and unlock its true potential.



## Metasys Building Management System

### **Metasys® by Johnson Controls**

- Building Network
- Graphics and Dashboard Manager
- Alarm Manager/ Monitor
- Equipment Summary
- Equipment Activity
- Equipment Relationships
- Potential Area Problems
- Schedule/ Calendar
- Trend
- Advanced Search
- Activity / Alarm /Audit /Trend Report
- Bulk Command
- Timed Operator Commands
- Annotations

## Metasys Building Management System

### **Metasys® for Validated Environments**

MVE is an enhanced feature of the Metasys system product line. It manages and stores critical building data to facilitate United States Food and Drug Administration (FDA) electronic records and electronic signature requirements (Title 21 Code of Federal Regulation [CFR] Part 11).

MVE also provides record compliance with:

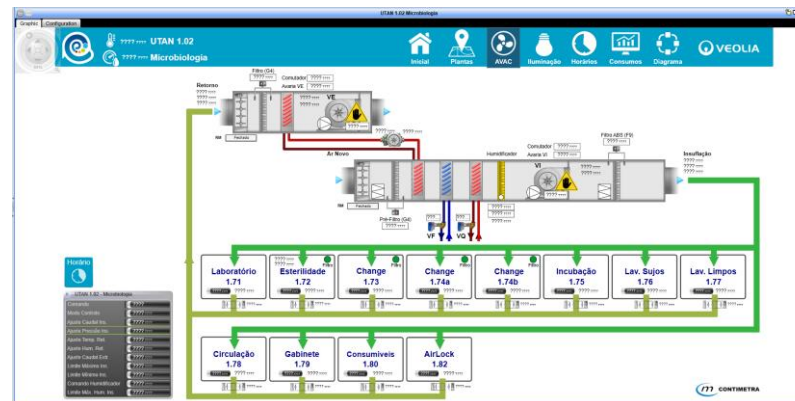
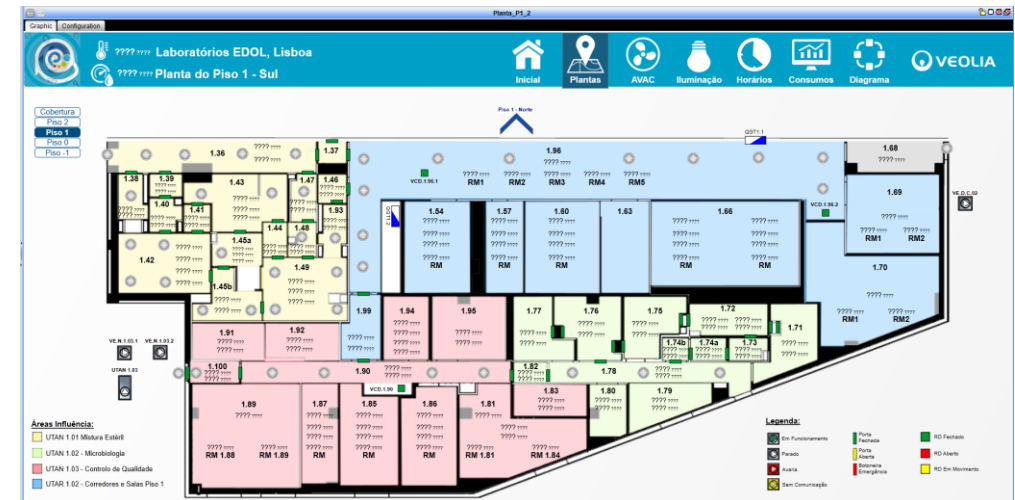
- Annex 11 of the European Union Good Manufacturing Practice (EU GMP) regulations (European Medicines Agency [EMA] 1998)
- Agency regulations around the world that deal with electronic records and electronic signature requirements



## Most Recent Pharmaceutical BMS

### Edol Laboratories

- ADX (Extended Application Data Server)
- Metasys for Validated Environments
- Room Pressure and T/H Control
- EasyLab (Trox) Control fume hood
- Full AHU Control
- Cool/Heat Water Production Control
- Fire/smoke Dampers monitor
- Door interlock Control
- FFU (Fan Filter Unit) Control
- Lighting Control
- Energy monitor
- Alarm, trend and Energy Report
- Multiple Touchscreen Display

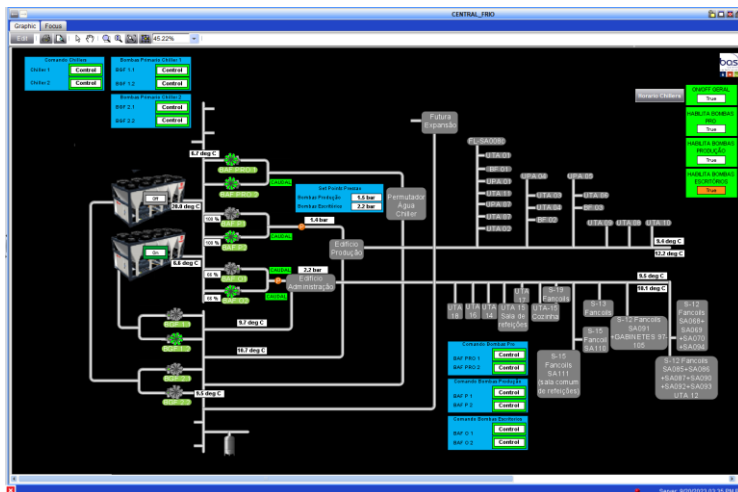
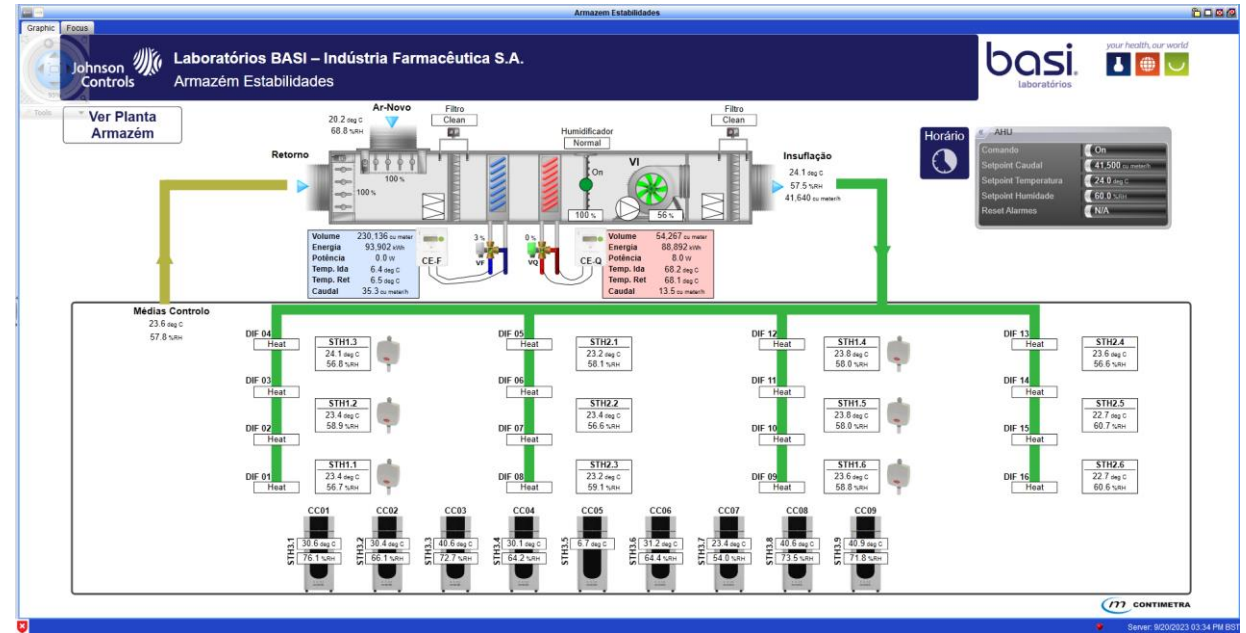




## Most Recent Pharmaceutical BMS

### Basi Laboratories

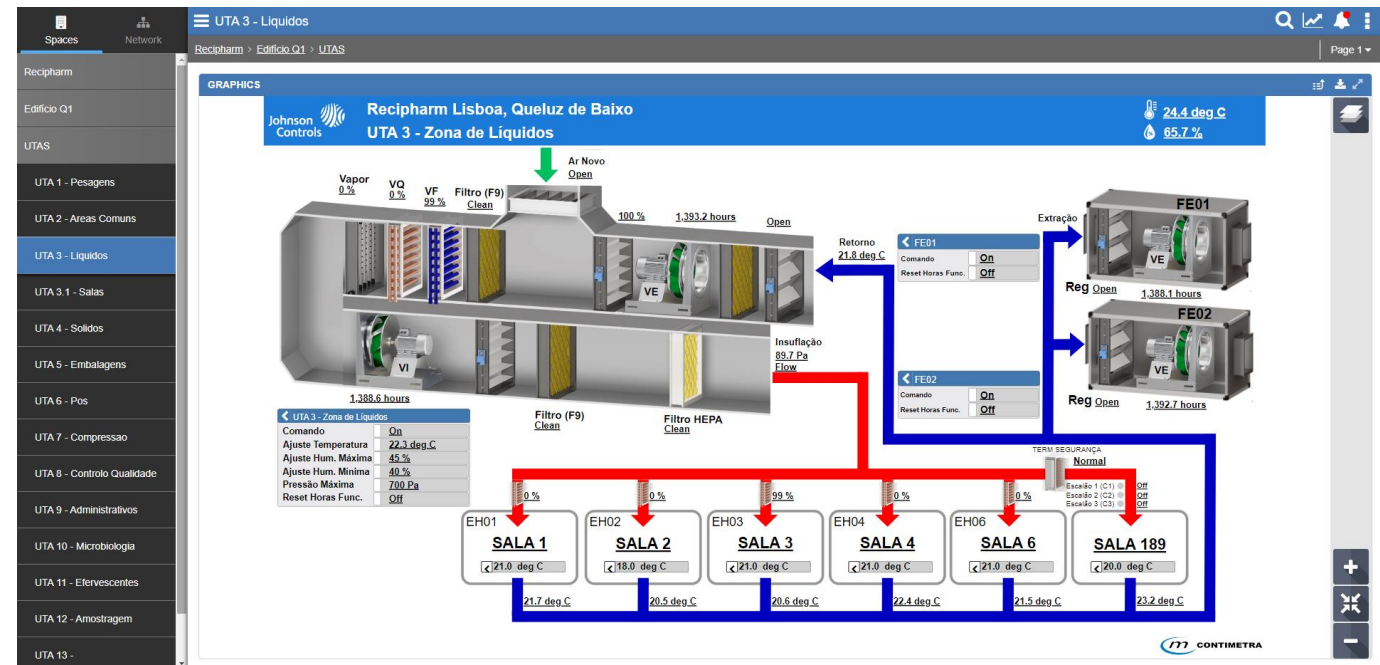
- ADX (Extended Application Data Server)
- Metasys for Validated Environments
- Room T/H Control
- Full AHU Control
- Cool/Heat Water Production Control
- Alarm and trend Report



## Most Recent Pharmaceutical BMS

### Recipharm Building Q1 & Q2

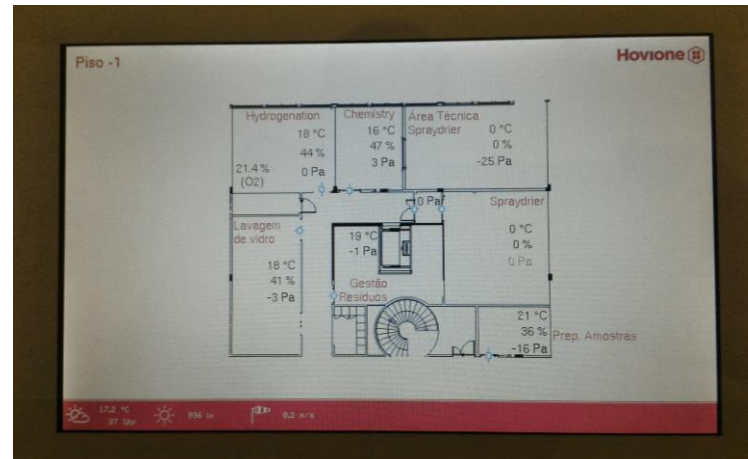
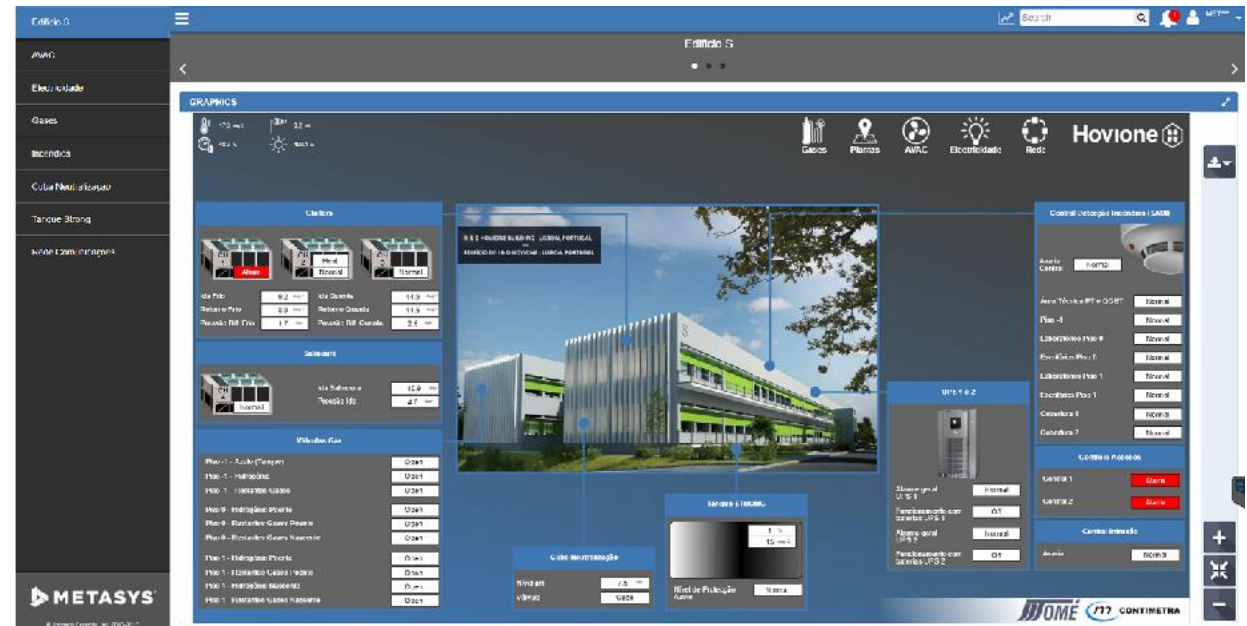
- ADX (Extended Application Data Server) with remote SQL Database
- Metasys for Validated Environments (future)
- Room T/H Control
- Full AHU Control
- Cool/Heat Water Production Control
- Alarm and trend Report



## Most Recent Pharmaceutical BMS

### Hovione – R&D Building S – Lumiar

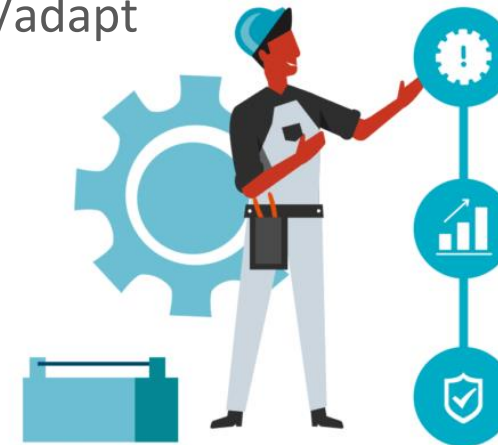
- ADS (Application Data Server)
- Room Pressure and T/H Control
- EasyLab (Trox) Control fume hood
- AHU Integration Control
- Cool/Heat Water Production Control
- Fire/smoke Dampers monitor
- Lighting Control
- Energy monitor
- Alarm, trend and Energy Report
- Multiple Touchscreen Display





## Maintenance Department

- Scheduled and /or on-call visits
- Most probable and Critical Areas Focus
- BMS Enhancements by request
- Field Equipments, Controllers and logic program test and replace/adapt



SERVICES DIVISION  
BMS Supply, Install and Maintenance

---



Where you can look to our portfolio, achievements and case studies



[www.contimetra.com](http://www.contimetra.com)

